

CRSPSIFT VERSION 4.3.13 RELEASE NOTES

FEBRUARY 2015

CRSPSift Version 4.3.13 is a maintenance upgrade and is not mandatory to subscribers who have a version of Sift that is currently supported. It includes solutions to issues introduced with increased Windows security and offers support for queries created in earlier versions of Sift.

For optimal performance, uninstall prior versions of Professional and Enterprise before installing CRSPSift 4.3.13.

- ♦ Two different versions of Enterprise servers cannot coexist on the same server.
- ♦ Multiple Professional versions will conflict and not function correctly.

To Uninstall, use Add or Remove Programs, accessible from your Start Menu > Control Panel > Add or Remove Programs.

INSTALLATION

Enterprise and Professional versions of CRSPSift 4.3.13 available for download through CRSP's IPSwitch MoveIT account at <https://crsp.moveitcould.com>. Guides and detailed information about Sift can be found on the CRSP website at <http://www.crsp.chicagobooth.edu/products/software-access-tools/crpsift>.

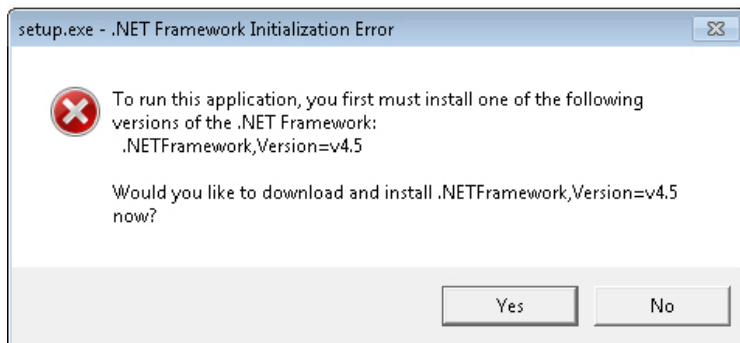
CRSPSIFT VERSION SUPPORT SCHEDULE

- CRSPSift Versions 4.2* expired in August 2014. CRSP continues to provide limited support for 4.2 for those who have used the update tool on Windows 7 & higher computers.
- CRSPSift Version 4.36 expires in August 2015.
- CRSPSift Version 4.3.13 has no expiration.

WINDOWS SUPPORT FOR CRSPSIFT

CRSPSift 4.3.13 is fully supported on Windows 7 and Windows 8 32- and 64-bit. Servers supported for use with the Enterprise Edition of CRSPSift include Server 2008 R2 and Server 2012 R2.

CRSPSift requires at least .NET Framework, Version 4.51. Windows 8 systems will have this already installed. Windows 7 systems may require an upgrade. If it is not found, you will receive the following message. Upon completion of the download and installation of .NET Framework, Sift install will restart.



WHAT'S NEW

- CRSP has removed the Expiration Date from this version of Sift.
- Mutual Funds: CRSP Objective Codes have been added to the Reference tables. From Tools on the Menu bar, select **References > Mutual Fund References > CRSP Objective Code**

RESOLVED ISSUES

- Queries created from Sift versions 4.2* can be open, converted, and saved in this latest version 4.3.13.
- Upon installation of Sift 4.3.6, for some computer configurations, the license file was not detected. This issue has been site-specific. The organizations who reported these issues and with whom CRSP has worked have found resolution in this new build.
- A defect in converting total dividend amount (TDIVAMT) and factor to adjust price (FACPRC) to a daily time series and their monthly time series equivalents MTDIVAMT and MFACPRC was identified and corrected. The defect was introduced in CRSPSift Version 4.3.6 and continued into CRSPSift version 4.3.12. This is resolved in Sift Version 4.3.13.

KNOWN ISSUES

TSQUERY WITH CCM DATA ITEMS

A TSQuery that is created for the full universe of securities (List All option) and only CCM data items will fail. To work around, add one CRSP Stock item to the query and it will run successfully.

ADOBE FLASH MESSAGE

When installing Sift on a Windows 7, 64-bit machines, the prerequisite checker will indicate a failure if Adobe Flash 11 is not found. This is not a fatal error, and as long as there is a version of Flash on the computer, Sift will work as expected.



MUTUAL FUNDS IN SIFT

Arrows used to navigate through Access keys can occasionally cause a time-out error.

